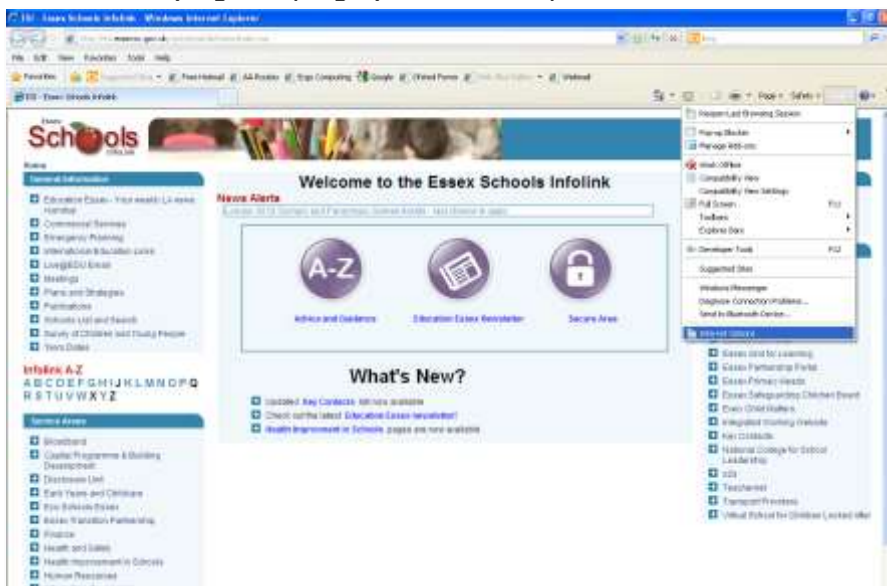


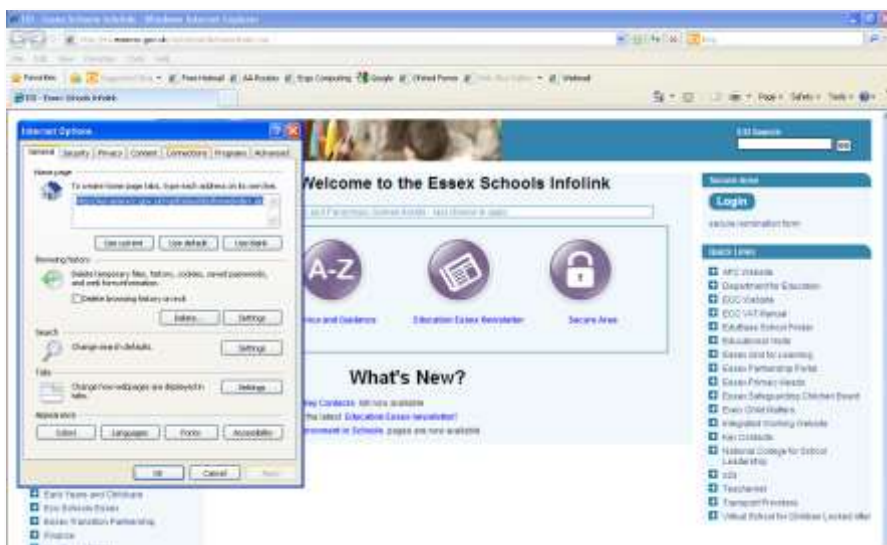
How to change Internet Proxy Settings

When using devices, such as laptops, between Home and School, there are some Internet changes that need to be made. This is because Essex Broadband uses a Proxy server as a gateway to the Internet, whereas when using Internet at home there is no need for a proxy server. To manually change the settings follow the steps below.

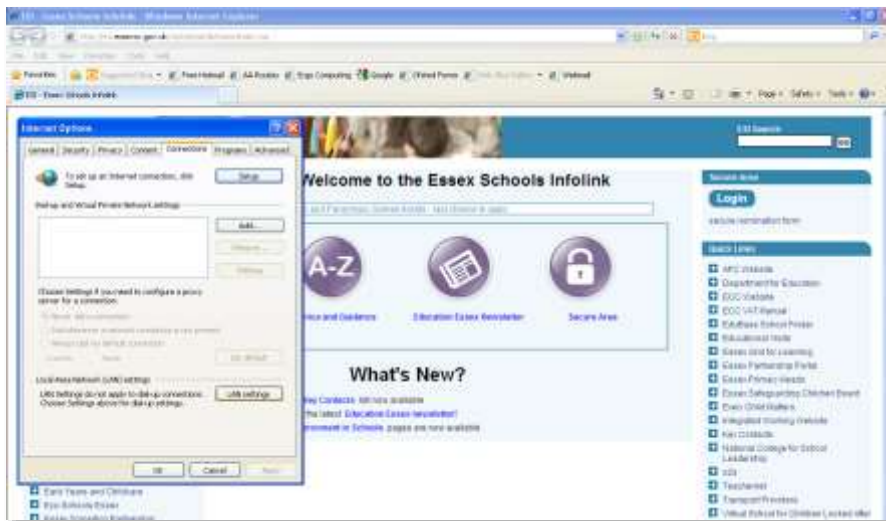
1. Open internet explorer.
2. Click on tools (Cog in top right) & Internet Options



3. Click on Connections Tab



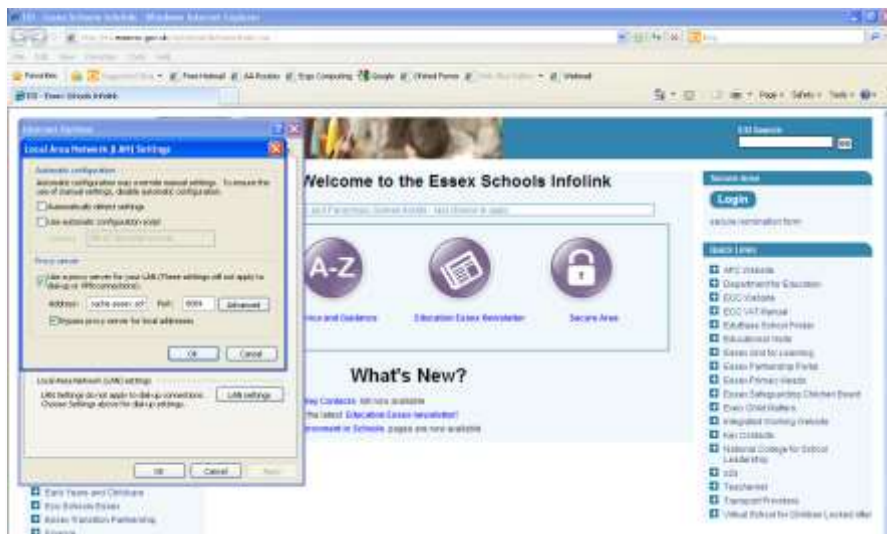
4. Click on LAN Settings



5. Change the settings to:

At School – Tick "Use a Proxy Server...."

At Home – Untick – "Use a Proxy Server..."



Essex School Settings Are:

Address: 10.34.1.54

Port for Pupils: 8082

Port for Staff: 8084